

Model

RPDL4-33-S

1.435 - 5.150 GHz - L , S, C Band

4-ft (1.2m) Dual Linear Polarized Antenna

The RPDL4-33-S is designed for use with L/S/C-band telemetry requirements but can be used for any other communications requirement within the operating frequency band of the antenna. This 4-ft (1.2m) diameter antenna is dual linear polarized, operating from 1.435 GHz to 5.150 GHz. The design incorporates our COTS mount for azimuth and elevation adjustment. The RF inputs are SMA female connectors and are located behind the focal point of the main reflector. The RF ports of the antenna are not phase-matched to one another.



Configuration

Frequency Band	1.435 - 5.150 GHz	
Type	Dual Linear Polarized Antenna	(Dual CP models available)
Feed Input	SMA female	
Environmental use	Sealed for outdoor use	

Port 1

Frequency (GHz)	Gain (dBil)	HPBW (deg.)		On-Axis X-pol (dB)	Port-to-Port Isolation (dB)	Return Loss (dB)
		E-Plane	H-Plane			
1.435	19.5	11.6	10.6	15.5	16.4	17.7
3.292	26.8	5.1	4.4	14.5	19.8	6.3
5.150	29.8	3.6	3.0	14.5	15.6	6.5

Port 2

Frequency (GHz)	Gain (dBil)	HPBW (deg.)		On-Axis X-pol (dB)	Port-to-Port Isolation (dB)	Return Loss (dB)
		E-Plane	H-Plane			
1.435	19.5	11.6	10.5	15.8	16.4	17.9
3.292	26.8	5.1	4.4	15.5	19.8	9.1
5.150	29.8	3.3	3.0	14.6	15.6	9.7

Notes:

1. Dual Circular versions are also available.
 2. Alternate coaxial input styles are available upon request.
 3. Referenced product specifications are subject to change without notice.
- Designed, Engineered, and Manufactured in Windham, ME USA
 mWAVE Industries is part of the Alaris Holdings Group of Companies.
 © mWAVE Industries LLC - 2023 All rights reserved



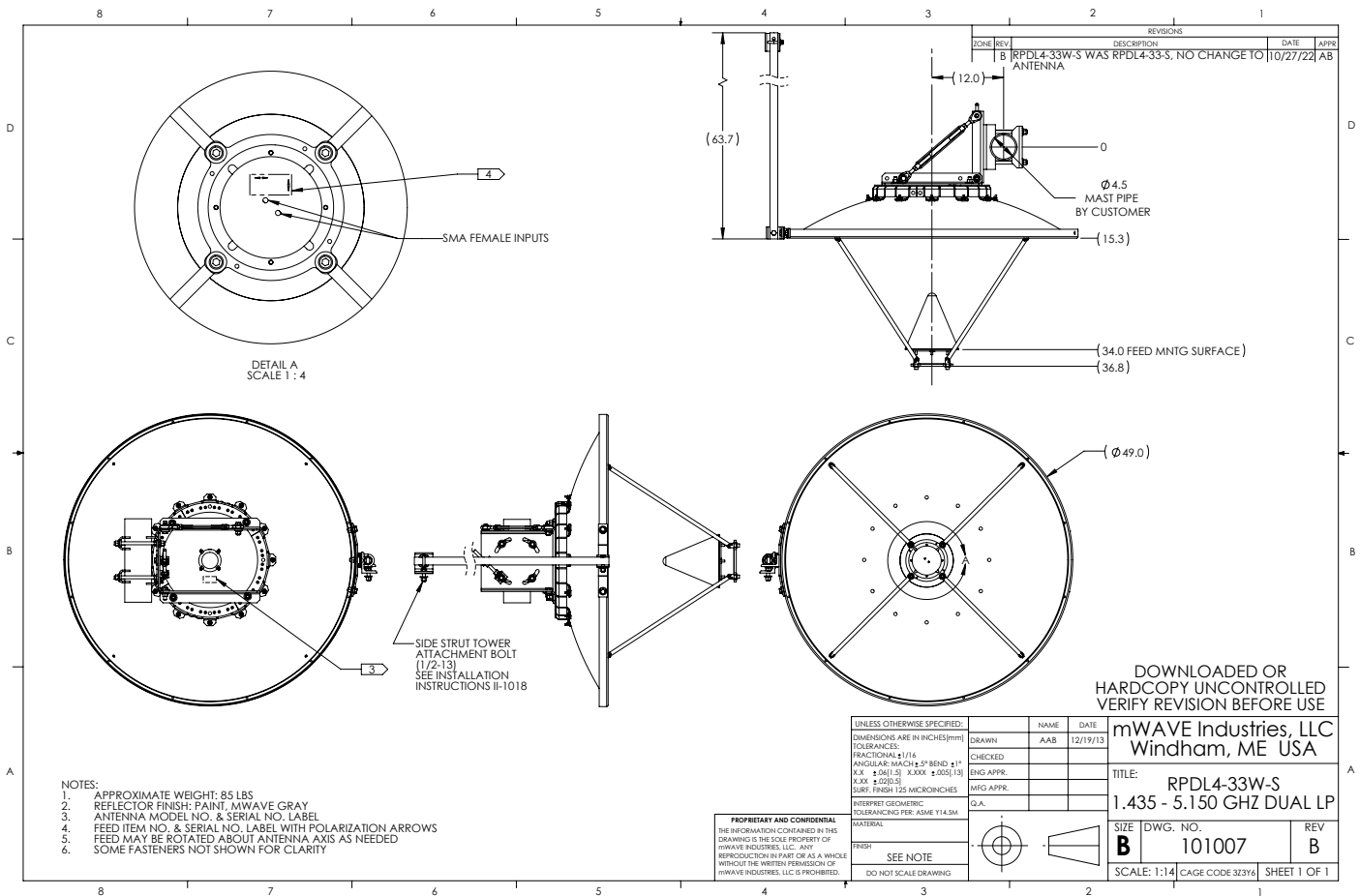
Model

RPDL4-33-S

1.435 - 5.150 GHz - L, S, C Band

4-ft (1.2m) Dual Linear Polarized Antenna

Mechanical



Notes:

- Dual Circular versions are also available.
- Alternate coaxial input styles are available upon request.
- Referenced product specifications are subject to change without notice.
Designed, Engineered, and Manufactured in Windham, ME USA
mWAVE Industries is part of the Alaris Holdings Group of Companies.
© mWAVE Industries LLC - 2023 All rights reserved

FORM: RPD4-33-S_dual-linear-L-S-C-band-antenna_230322_rev.0-DS

