

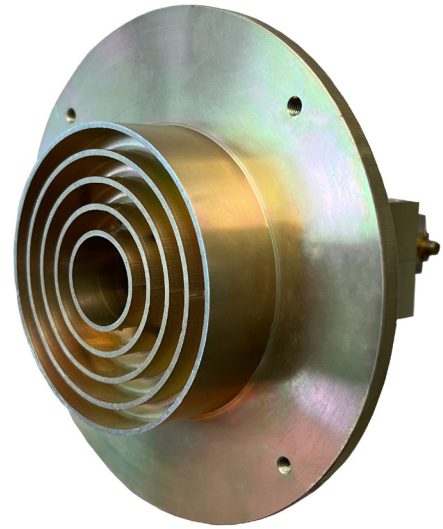
Model

FPP1-103A-S-LX

8.000 – 12.000 GHz
Single Linear Wide Band Prime Focus Antenna Feed
High Cross Pol.

mWAVE's FPP1-103A-S-LX operates at 8.000 – 12.000 GHz and is a single linear prime focus feed that is equipped with a SMA female input. This model is one of mWAVE's comprehensive line of scalar feeds which operate over full waveguide frequency bands.

These antenna feeds exhibit superior cross polarization discrimination and low VSWR. All feeds share identical mounting and focal point placement offering a truly interchangeable feed family system. This feature makes them excellent candidates for outfitting antenna test ranges, portable multi-band coverage communications systems and can be incorporated into and used for numerous other wideband or narrow band communications applications.



Configuration

Frequency Band	8.000 - 12.000 GHz
Type	Single Linear Wide Band Prime Focus Antenna Feed <i>(Dual and CP available)</i>
Feed Input	SMA female
Mounting	6-in (152-mm) dia. mounting surface (4) tapped #10-32 holes on a 5.25" DBC
f/d ratio reflector	Designed for a 0.375 f/d ratio reflector can be used with 0.35 - 0.42 f/d reflectors.
On-axis axial ratio	1.5 dB or less
On-axis cross pol	38 dB min. or better
Average VSWR	<1.5:1
Nominal gain	Approximately 8.5-10.5 dBic over the frequency band
Power	20W CW power handling (alternate higher power models available)
Environmental use	Sealed for outdoor use
Construction	Machined from high-strength 6061-T6 aluminum stock
Finish	Chemical Conversion per MIL-DTL-5541F, Type 2, Class 1A, Clear finish
Origin	Engineered and Manufactured in Windham, ME USA

Specification Notes:

1. Optional waveguide polarizers are available for scalar feed models for CP requirements.
2. Dual linear and dual circular versions of this antenna feed design are also available.
3. Scalar feed models can be optimized for alternate f/d ratio reflectors.
4. An additional mounting plate can be added to suit customer specific mounting requirements.
5. Alternate coaxial input styles are available upon request.
6. Scalar feeds with waveguide inputs are capable of handling higher transmit power.

- Notes: (1.) Referenced product specifications are subject to change without notice.
Designed, Engineered, and Manufactured in Windham, ME USA
mWAVE Industries is part of the Alaris Holdings Group of Companies.
© mWAVE Industries LLC - 2023 All rights reserved
mWAVE source reference FPP Series Wide-Band-Antenna-Feeds_071129

Form: FPP1-103A-S-LX-230310_rev.0-DS

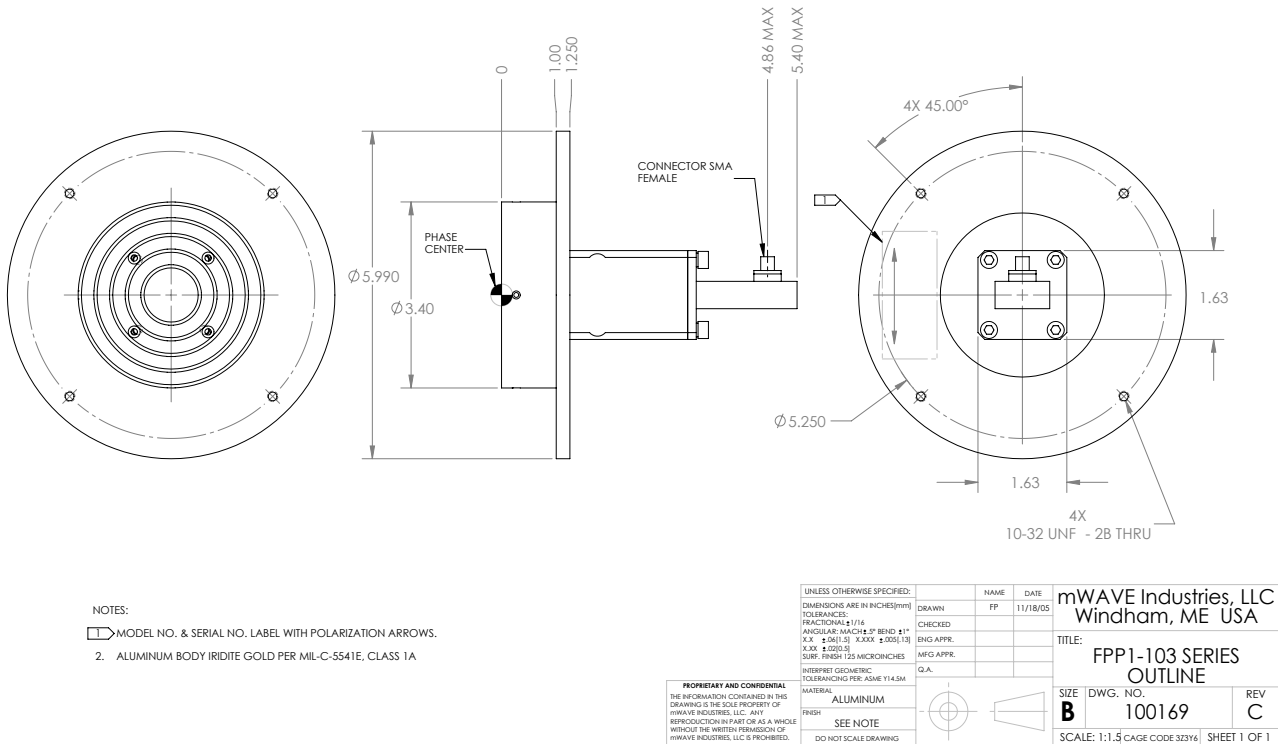


Model

FPP1-103A-S-LX

8.000 – 12.000 GHz
Single Linear Wide Band Prime Focus Antenna Feed
High Cross Pol.

Mechanical



Dimensions for Scalar Feeds (FPP1-103-S shown)

Specification Notes:

- Optional waveguide polarizers are available for scalar feed models for CP requirements.
- Dual linear and dual circular versions of the Model FPP2-19-S antenna feed are also available.
- Scalar feed models can be optimized for alternate f/d ratio reflectors.
- An additional mounting plate can be added to suit customer specific mounting requirements.
- Alternate coaxial input styles are available upon request.
- Scalar feeds with waveguide inputs are capable of handling higher transmit power.

Notes: (1.) Referenced product specifications are subject to change without notice.
Designed, Engineered, and Manufactured in Windham, ME USA
mWAVE Industries is part of the Alaris Holdings Group of Companies.
© mWAVE Industries LLC - 2023 All rights reserved
mWAVE source reference FPP Series Wide-Band-Antenna-Feeds_071129

Form: FPP1-103A-S-LX-230310_rev.0-DS

