

28.07.2023

KU PA BB 003350 – 15 B



Manual

Specification

Type	KU PA BB 003350 – 15 B	
Frequency range		30 ... 3500 MHz
Output power Psat	0.03-2.5 GHz	min. 15 W @ 0-5 dBm input power
	2.5-3.5 GHz	min. 10 W @ 0-5 dBm input power
Duty cycle		Up to 100 % without limitations
Max. input power w/o damage		17 dBm
Small signal gain		min. 45 dB
Large signal gain		min. 39 dB @ 0 dBm Pin
Large signal gain flatness	0.03-2.5 GHz	max. ±1.5 dB @ -5 dBm Pin
	2.5-3.5 GHz	max. ±2 dB @ 0 dBm Pin
Harmonics 2 nd		< -12 dBc @ nominal Pout (CW)
Harmonics 3 rd		< -12 dBc @ nominal Pout (CW)
Linearity IM3		< -12 dBc @ 15 W PEP
Linearity IM2		< -6 dBc @ 15 W PEP
Non harmonic spurs		< -60 dB
Noise figure	30-200 MHz	max. 15 dB
	0.2-3.5 GHz	max. 9 dB
Mute (on/off)		max. 5 µs (50 % TTL to 10/9 % RF)
Muted output power		max. -140 dBm/Hz
Switching rate of mute signal		max. 10 kHz
Input VSWR	30-100 MHz	< 1.6:1 @ -5 dBm Pin
Input VSWR	0.1-3.5 GHz	< 1.5:1 @ -5 dBm Pin
Max. load VSWR		10:1, no damage
Supply voltage range		18-36 V DC (Pin 6, 7: +V DC, Pin 7, 9: -V GND) -> <i>always connect both PINs due to the even distribution of the current load</i>
Current consumption	0.03-2.5 GHz	≤ 3.6 A @24 V, 15 W CW
	2.5-3.5 GHz	≤ 3.6 A @24 V, 10 W CW
Quiescent current consumption		≤ 2.5 A @24 V
Current consumption at mute		≤ 0.5 A @24 V
Impedance		50 Ω
Analog BIT outputs	Forward power (0-4 V), logarithmic characteristic, 50 mV/dB, negative slope (Pin 1) Reverse power (0-4 V), logarithmic characteristic, 50 mV/dB, negative slope (Pin 2) Supply current (0-4 V), linear characteristic, 0.5 V/A, positive slope (Pin 3) Over-temperature alarm, TTL, low=PA on, high=PA protected (Pin 4)	
RF mute input	TTL, low=PA on, high=PA off (Pin 5)	
Feature	KU PA BB 003350 – 15 A version with two RF inlets available	

Features

- High bandwidth
- Variety of analog monitor signals
- Very fast mute functionality
- High efficiency
- Low small and large signal gain ripple

Applications

- Analog & digital transmission systems
- Measurement and laboratory equipment
- Communication systems
- Jammer applications

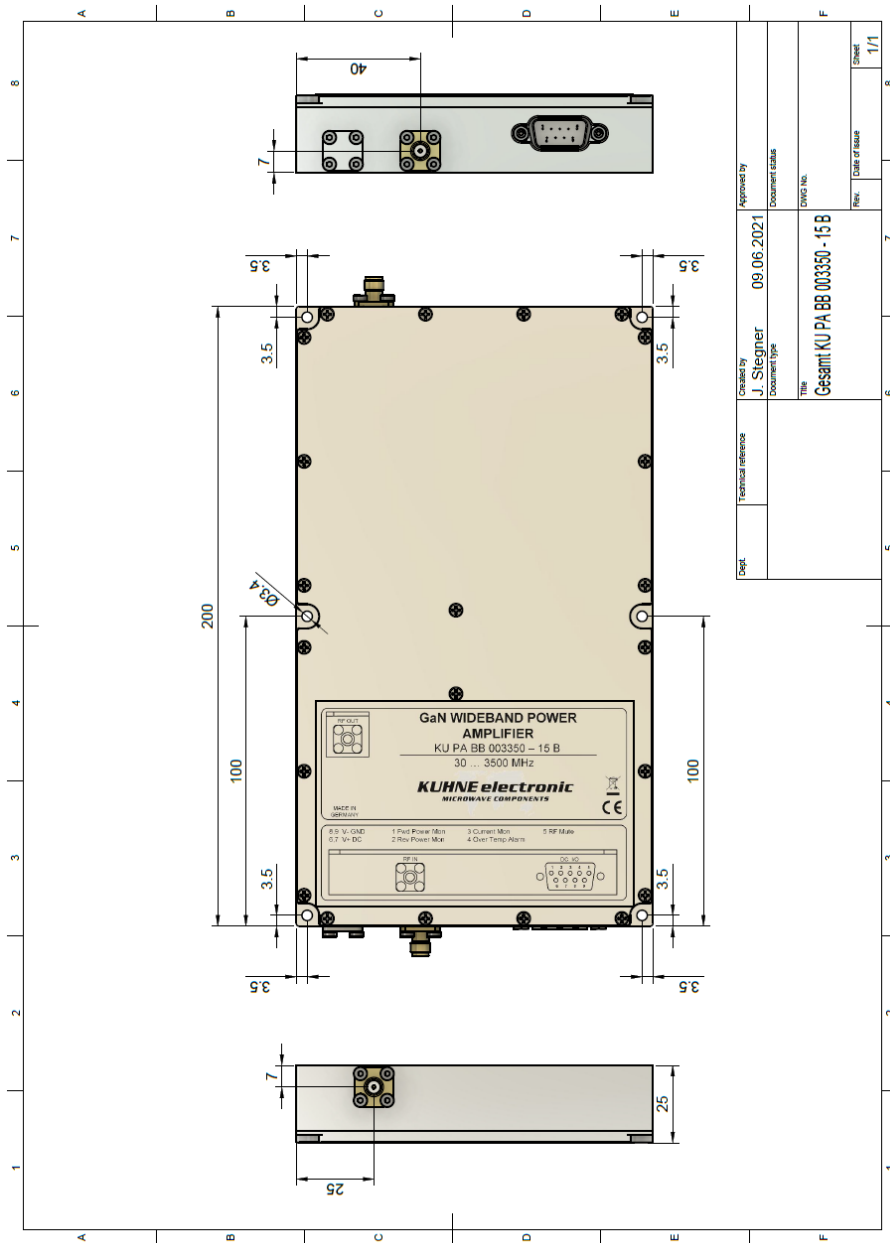
The KU PA BB 003350-15 A/B was specially developed for jammer applications. Due to the high bandwidth and, at the same time, low gain ripple, the power amplifier can interfere with all mobile radio bands and many wireless standards.

Amplifier should be mounted on heat sink!



CE Konformität / CE Conformity
EMC directive 2014/30/EU
Low voltage directive 2014/35/EU
RoHS directive 2011/65/EU

Mounting holes



Label

