

# KU LNA BB 0515-4 B-N - Low Noise Broadband Preamplicifier

## Technical Specifications

Electrical Specifications				
Parameter	Min.	Typ.	Max.	Units
Frequency	5		1500	MHz
Gain	18	20		dB
Gain Flatness		±0.7		dB
Noise Figure (30...1500 MHz)		1.2	2	dB
Input Return Loss (S11) (30...1500 MHz)	6	10		dB
Output Power For 1 dB Compression (P1dB)		21		dBm
Output Third Order Intercept (IP3)		33		dBm
DC Supply Voltage	12		14	V
Supply Current		90		mA

Mechanical Specifications	
Input Connector	N-female, 50 ohms
Output Connector	N-female, 50 ohms
Case	milled aluminium
Dimensions (L x W x H)	50 x 30 x 22 mm
Weight	85 g

### Applications:

Broadband amplifier for spectrum analysis  
 Power amplifier for network analysis (sweep oscillators)  
 Suitable for large signal environments  
 CATV Distribution amplifier

### Fulfilled Standards:

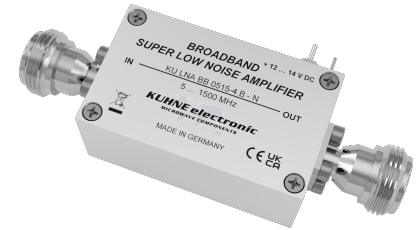
EMC directive 2014/30/EU  
 Low voltage directive 2014/35/EU  
 RoHS directive 2011/65/EU

Maximum Ratings	
Parameter	Ratings
Operating Temperature	-40...85°C
DC Voltage	15 V
Input RF Power	12 dBm

Permanent damage may occur if any of these limits are exceeded.

Noise figure specified at 18°C, will increase with higher temperature.

[Link](#) to the product page online.

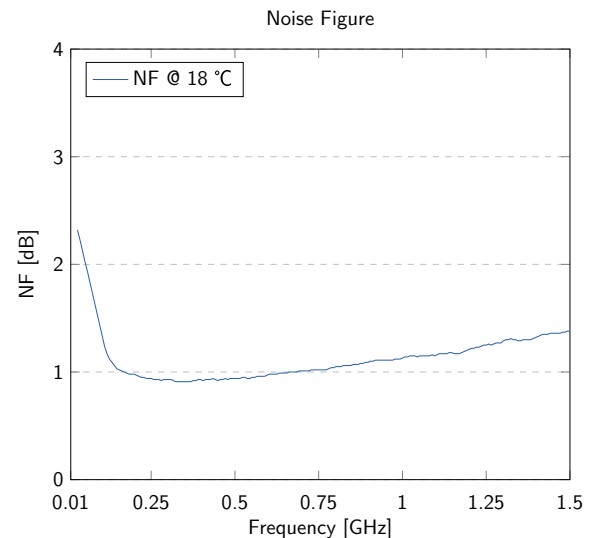
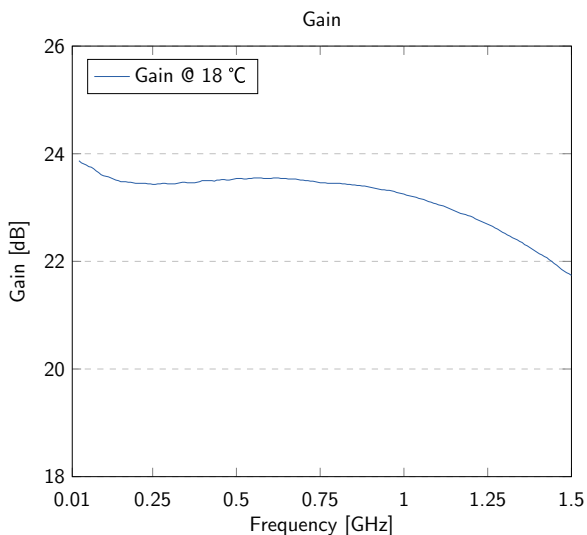


### Features:

Large bandwidth  
 High IP3  
 Solder pin for direct power supply  
 Reverse polarity protection

## Typical Performance Data and Curves

(DC Voltage = 12V, DC Current = 90mA)



## Notice

Additional protection against moisture is essential in case of outdoor installation.  
 Installation in a waterproof case is recommended.

## Test Certificate

Sig.: \_\_\_\_\_

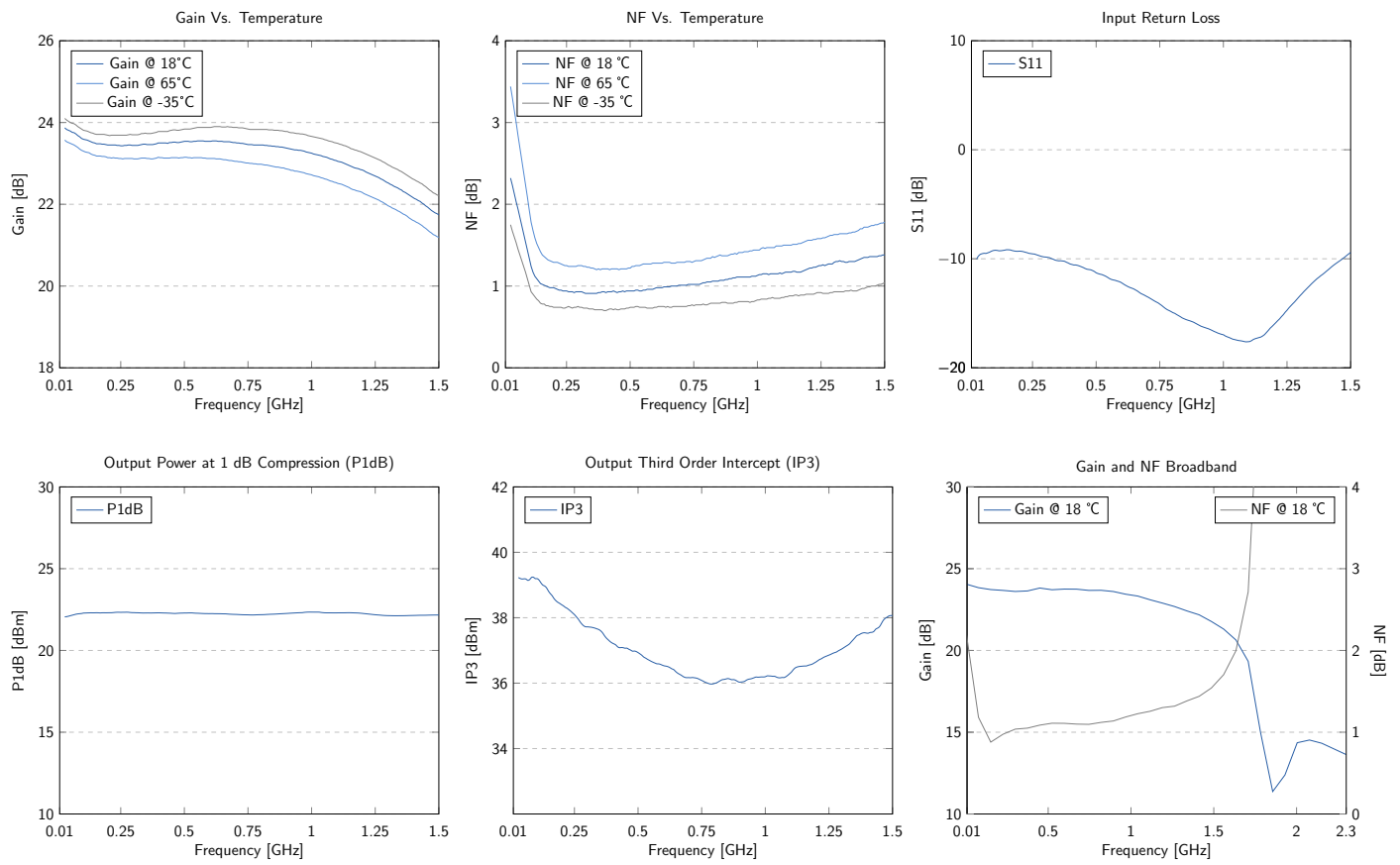
QS: \_\_\_\_\_

SN: \_\_\_\_\_

# KU LNA BB 0515-4 B-N - Low Noise Broadband Preamplicifier

## Typical Curves

(DC Voltage = 12V, DC Current = 90mA)



## Typical Data

(DC Voltage = 12V, DC Current = 90mA)

Frequency (MHz)	VSWR	P1dB (dBm)	IP3 (dBm)	Gain (dB)	Noise Figure (dB)
200	2.04	22.3	38.4	23.4	0.97
400	1.86	22.3	37.2	23.5	0.93
600	1.64	22.2	36.5	23.5	0.98
800	1.44	22.2	36.0	23.5	1.05
1000	1.33	22.3	36.2	23.5	1.13
1200	1.38	22.3	36.6	22.8	1.21
1500	2.02	22.2	38.1	21.7	1.38

# KU LNA BB 0515-4 B-N - Low Noise Broadband Preampfier

## Outline Drawings

(Unit: mm)

