

# KU LNA BB 3000 N-TM - Low Noise Broadband Preamplicifier

## Technical Specifications

Electrical Specifications				
Parameter	Min.	Typ.	Max.	Units
Frequency	10		3000	MHz
Gain	25		30	dB
Gain Flatness		±1.5		dB
Noise Figure (25...2800 MHz)		1.5	2.1	dB
(2800...3000 MHz)		2	2.5	dB
Input Return Loss (S11)		10		dB
Output Power at 1 dB Compression (P1dB)		15		dBm
Output Third Order Intercept (IP3)	26	30		dBm
DC Supply Voltage	12		15	V
Supply Current		150		mA

Mechanical Specifications	
Input Connector	N-female, 50 ohms
Output Connector	N-female, 50 ohms
DC Power Supply Connector	3-pin connector MS3102E
Case	Water resistant case incl. V2A mounting clamp
Dimensions (L x W x H)	115 x 82 x 56 mm
Weight	330 g

Maximum Ratings	
Parameter	Ratings
Operating Temperature	-40..85°C
DC Voltage	16 V
Input RF Power	3 dBm

Permanent damage may occur if any of these limits are exceeded.

Noise figure specified at 18°C, will increase with higher temperature.

[Link](#) to the product page online.



### Applications:

Communication systems  
Measurement and laboratory equipment

### Fulfilled Standards:

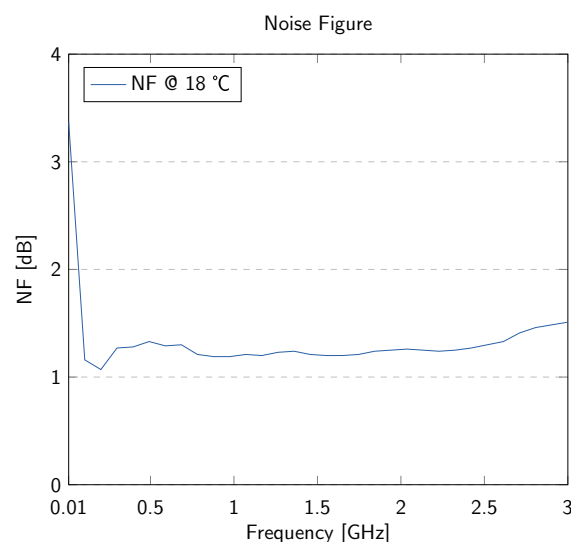
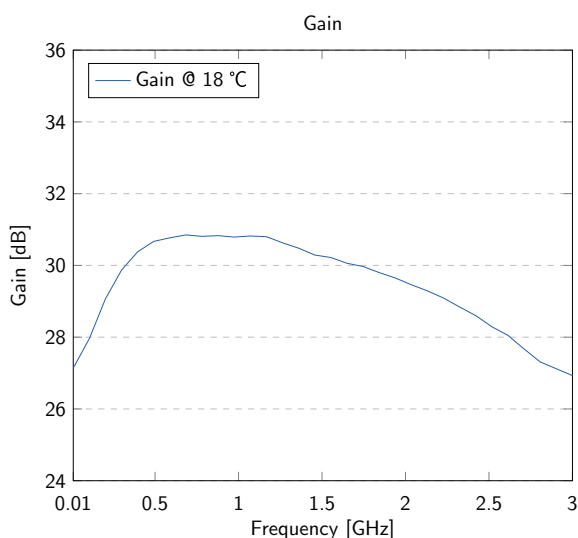
EMC directive 2014/30/EU  
Low voltage directive 2014/35/EU  
RoHS directive 2011/65/EU

### Features:

Large bandwidth  
Water resistant case  
Reverse polarity protection

## Typical Performance Data and Curves

(DC Voltage = 12V, DC Current = 150mA)



## Notice

Mating connector type is Amphenol MS3106E10SL-3S, not part of delivery

## Test Certificate

Sig.: \_\_\_\_\_

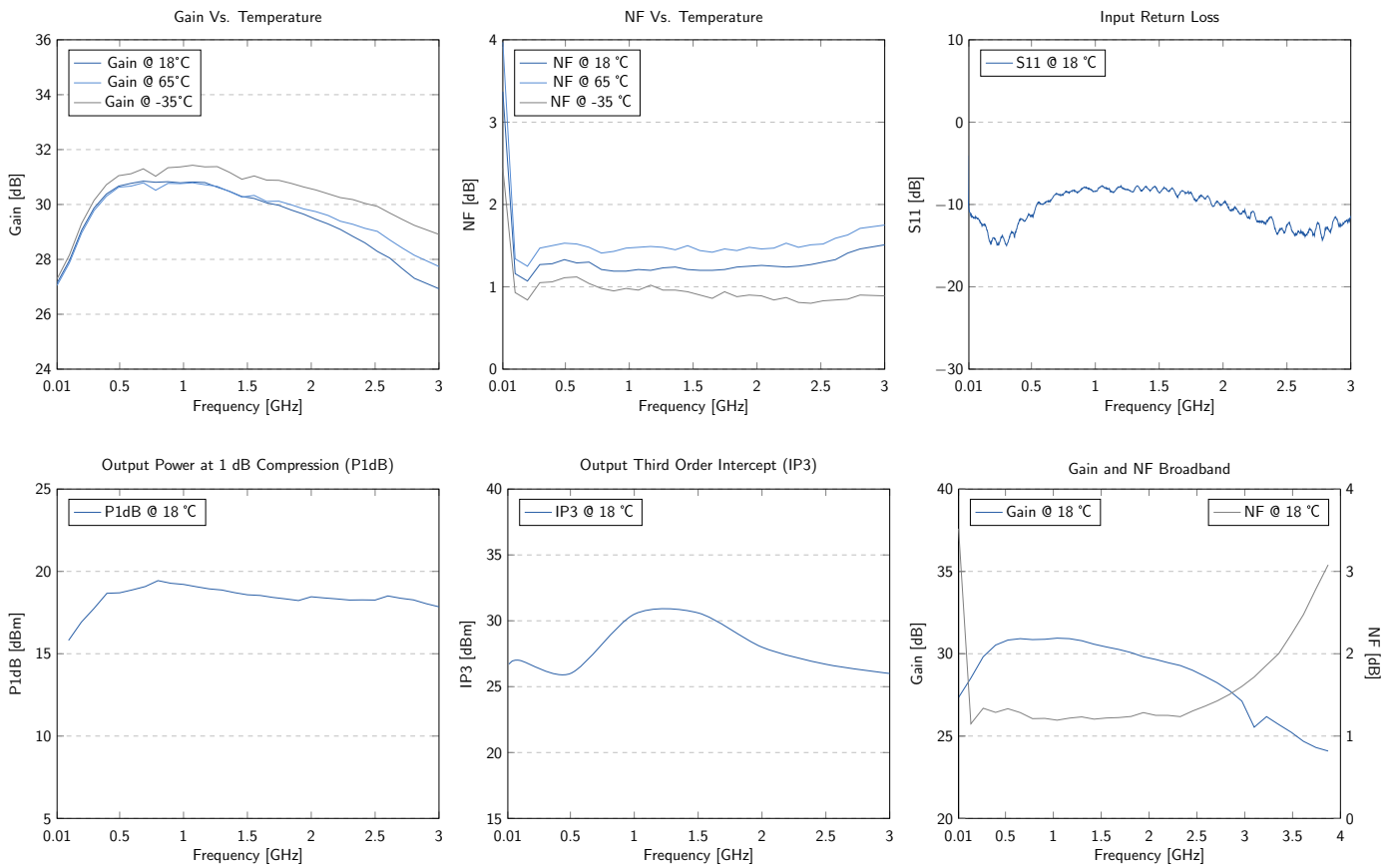
QS: \_\_\_\_\_

SN: \_\_\_\_\_

# KU LNA BB 3000 N-TM - Low Noise Broadband Preamplicifier

## Typical Curves

(DC Voltage = 12V, DC Current = 150mA)



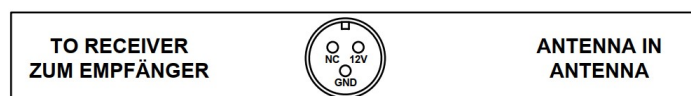
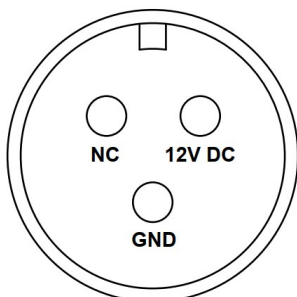
## Typical Data

(DC Voltage = 12V, DC Current = 150mA)

Frequency (MHz)	VSWR	P1dB (dBm)	IP3 (dBm)	Gain (dB)	Noise Figure (dB)
20	1.76	13.7	26.7	27.3	2.46
100	1.66	15.8	27.0	28.5	1.19
500	1.74	18.7	26.0	30.6	1.33
1000	2.24	19.2	33.5	30.7	1.20
1500	2.19	18.6	30.6	30.2	1.22
2000	1.95	18.5	28.0	29.6	1.25
2500	1.62	18.3	26.7	28.6	1.36
3000	1.72	17.9	26.1	27.1	1.60

## Pin Description

3-pin connector MS3102E series for power supply



# KU LNA BB 3000 N-TM - Low Noise Broadband Preampfier

## Outline Drawings

(Unit: mm)

