

KU LNA BB 3000 C-N - Low Noise Broadband Preamp

Technical Specifications

Electrical Specifications				
Parameter	Min.	Typ.	Max.	Units
Frequency	10		3000	MHz
Gain	25		30	dB
Gain Flatness		±1.5		dB
Noise Figure (25...2800 MHz)		1.5	2.1	dB
(2800...3000 MHz)		2	2.5	dB
Input Return Loss (S11)		10		dB
Output Power at 1 dB Compression (P1dB)		15		dBm
Output Third Order Intercept (IP3)	26	30		dBm
DC Supply Voltage	12		15	V
Supply Current		150		mA

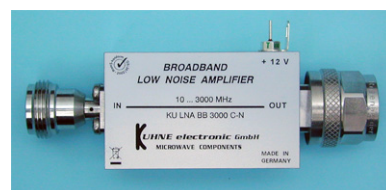
Mechanical Specifications	
Input Connector	N-female, 50 ohms
Output Connector	N-male, 50 ohms
Case	milled aluminium
Dimensions (L x W x H)	50 x 30 x 22 mm
Weight	100 g

Maximum Ratings	
Parameter	Ratings
Operating Temperature	-40...85°C
DC Voltage	16 V
Input RF Power	3 dBm

Permanent damage may occur if any of these limits are exceeded.

Noise figure specified at 18°C, will increase with higher temperature.

[Link](#) to the product page online.



Applications:

Communication systems
Measurement and laboratory equipment

Fulfilled Standards:

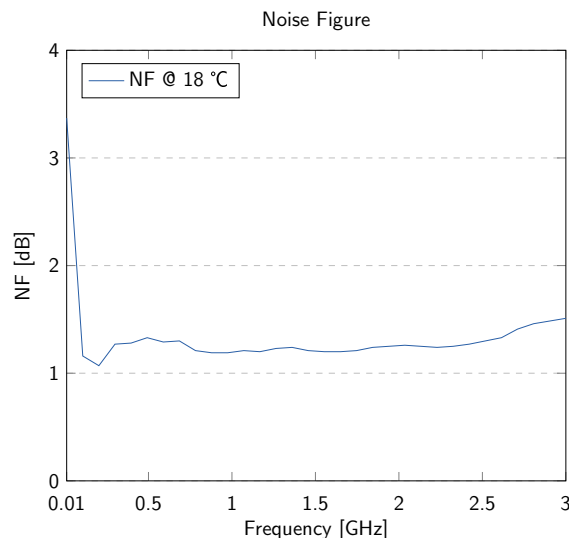
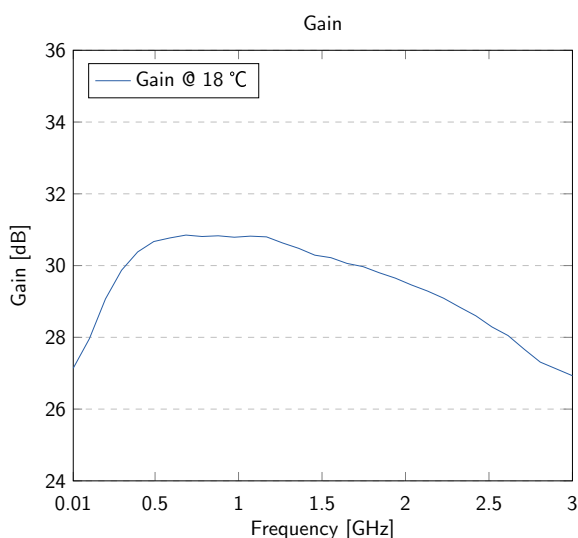
EMC directive 2014/30/EU
Low voltage directive 2014/35/EU
RoHS directive 2011/65/EU

Features:

Large bandwidth
Solder pin for direct power supply
Reverse polarity protection

Typical Performance Data and Curves

(DC Voltage = 12V, DC Current = 150mA)



Notice

Additional protection against moisture is essential in case of outdoor installation.
Installation in a waterproof case is recommended.

Test Certificate

Sig.: _____

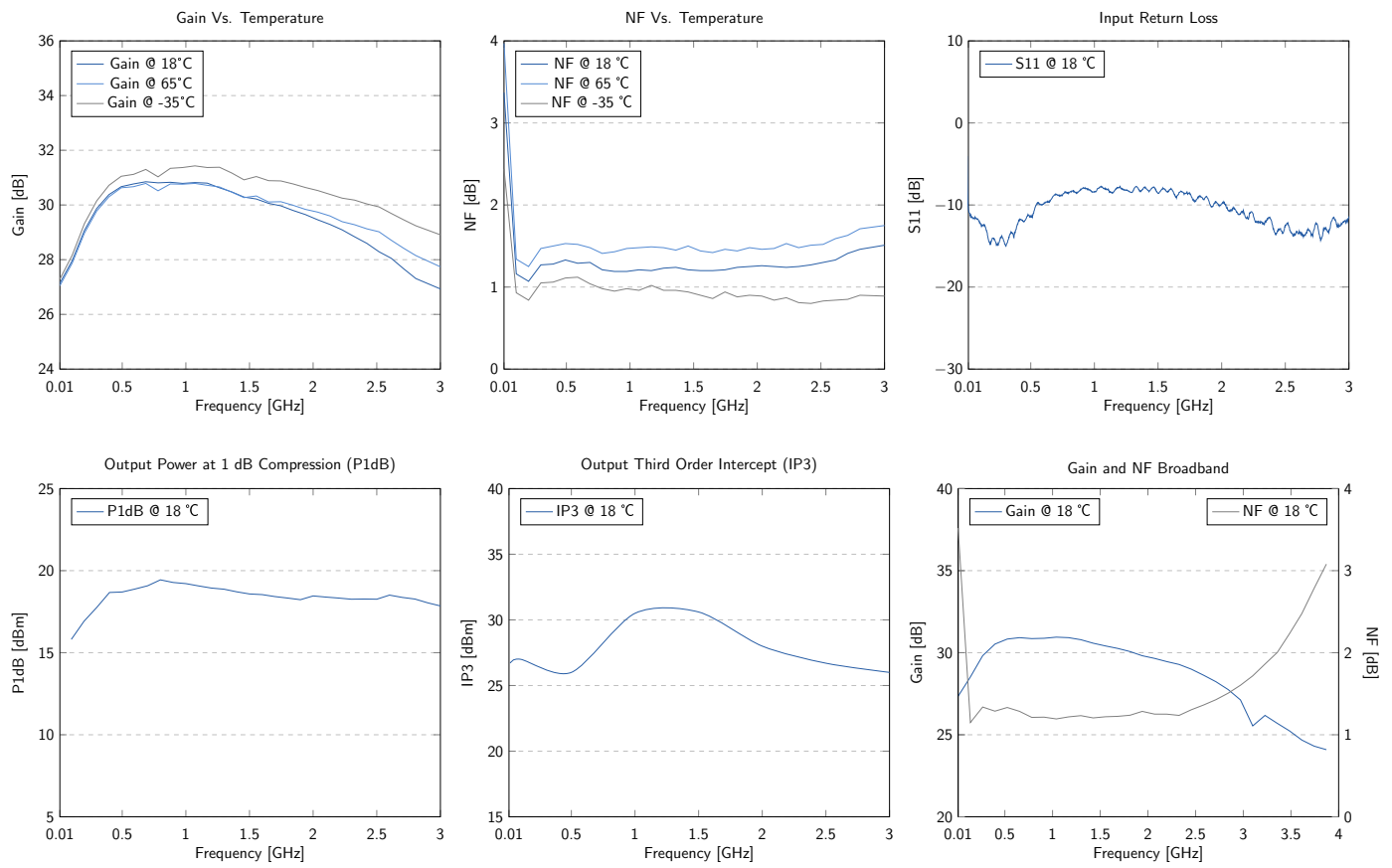
QS: _____

SN: _____

KU LNA BB 3000 C-N - Low Noise Broadband Preamplifier

Typical Curves

(DC Voltage = 12V, DC Current = 150mA)



Typical Data

(DC Voltage = 12V, DC Current = 150mA)

Frequency (MHz)	VSWR	P1dB (dBm)	IP3 (dBm)	Gain (dB)	Noise Figure (dB)
20	1.76	13.7	26.7	27.3	2.46
100	1.66	15.8	27.0	28.5	1.19
500	1.74	18.7	26.0	30.6	1.33
1000	2.24	19.2	33.5	30.7	1.20
1500	2.19	18.6	30.6	30.2	1.22
2000	1.95	18.5	28.0	29.6	1.25
2500	1.62	18.3	26.7	28.6	1.36
3000	1.72	17.9	26.1	27.1	1.60

KU LNA BB 3000 C-N - Low Noise Broadband Preamplicifier

Outline Drawings

(Unit: mm)

