

# KU LNA BB 2227 A - Low Noise Broadband Preamplicifier

## Technical Specifications

Electrical Specifications				
Parameter	Min.	Typ.	Max.	Units
Frequency	2200		2700	MHz
Gain	25			dB
Gain Flatness		±0.7		dB
Noise Figure		0.9	1.2	dB
Input Return Loss (S11)		10		dB
Output Power at 1 dB Compression (P1dB)		23		dBm
Output Third Order Intercept (IP3)		33		dBm
DC Supply Voltage	12		15	V
Supply Current		250		mA

Maximum Ratings	
Parameter	Ratings
Operating Temperature	-40..65°C
DC Voltage	15 V
Input RF Power	7 dBm

Permanent damage may occur if any of these limits are exceeded.

Noise figure specified at 18°C, will increase with higher temperature.

[Link](#) to the product page online.



Mechanical Specifications	
Input Connector	SMA-female, 50 ohms
Output Connector	SMA-female, 50 ohms
Case	milled aluminium
Dimensions (L x W x H)	78 x 41 x 22 mm
Weight	110 g



### Applications:

Digital broadcast systems (DVB-T, DVB-S)  
 Multichannel Multipoint Distribution Service (MMDS)  
 Measurement and laboratory equipment

### Fulfilled Standards:

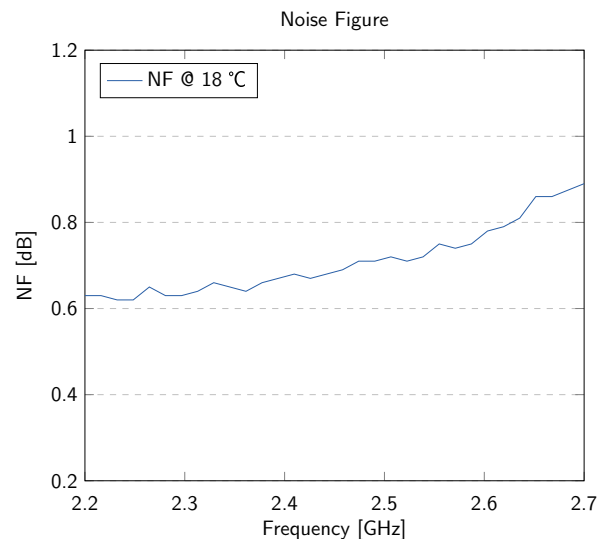
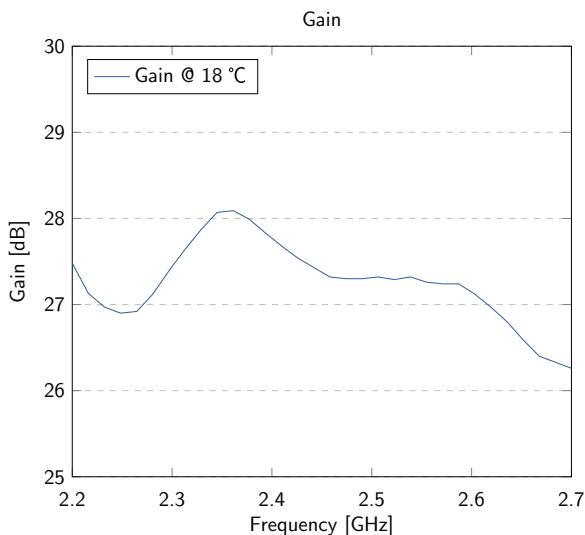
EMC directive 2014/30/EU  
 Low voltage directive 2014/35/EU  
 RoHS directive 2011/65/EU

### Features:

Internal bandpass filter  
 Remote power supply via output  
 Solder pin for direct power supply  
 Static protection (ESD) at RF input  
 Overvoltage protection and reverse polarity protection

## Typical Performance Data and Curves

(DC Voltage = 12V, DC Current = 250mA)



## Notice

Additional protection against moisture is essential in case of outdoor installation. Installation in a waterproof case is recommended.

## Test Certificate

Sig.: \_\_\_\_\_

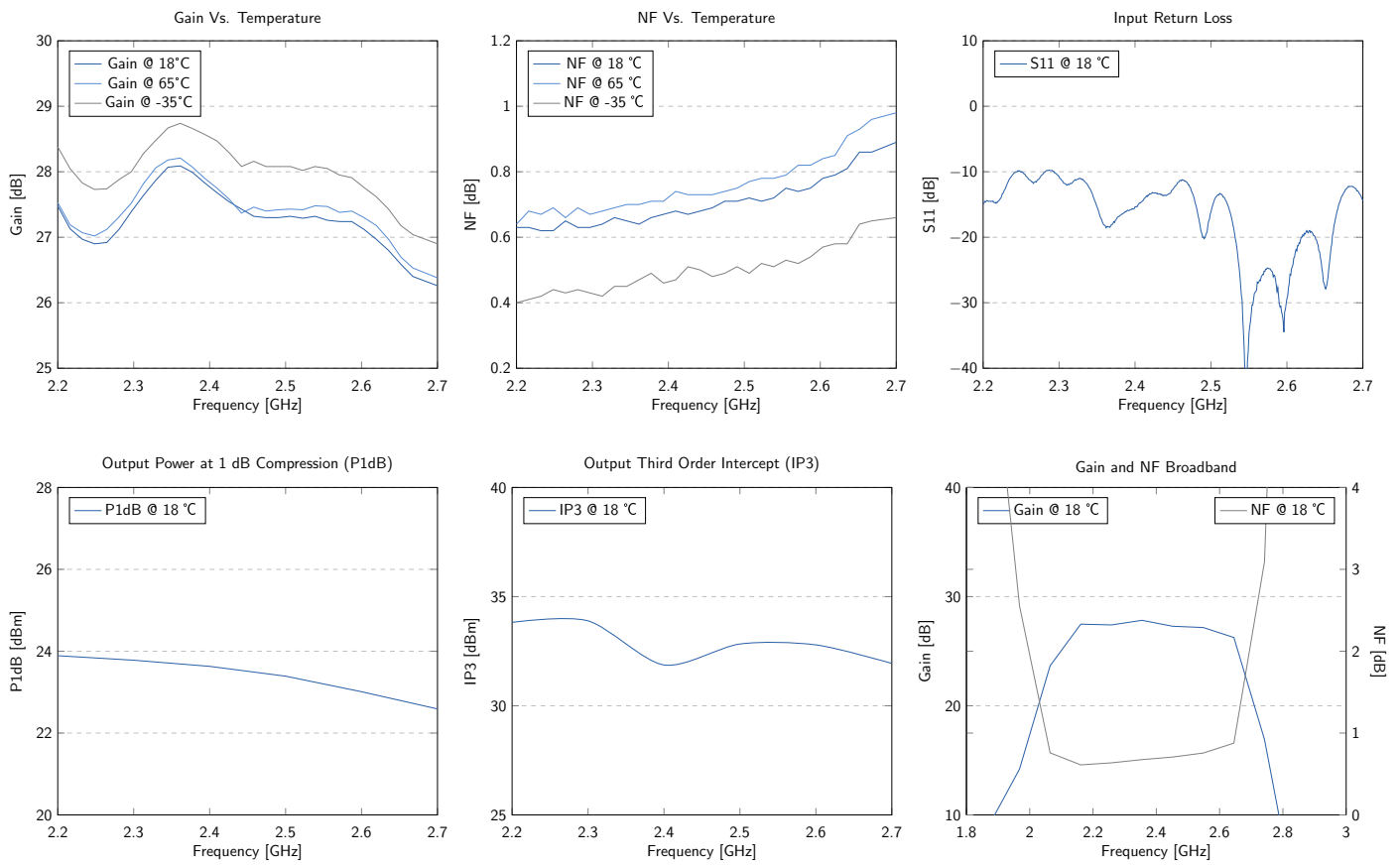
QS: \_\_\_\_\_

SN: \_\_\_\_\_

# KU LNA BB 2227 A - Low Noise Broadband Preamplicifier

## Typical Curves

(DC Voltage = 12V, DC Current = 250mA)



## Typical Data

(DC Voltage = 12V, DC Current = 250mA)

Frequency (MHz)	VSWR	P1dB (dBm)	IP3 (dBm)	Gain (dB)	Noise Figure (dB)
2200	1.44	23.9	33.8	27.5	0.63
2300	1.82	23.8	33.9	27.4	0.63
2400	1.41	23.6	31.9	27.7	0.68
2500	1.37	23.4	32.8	27.3	0.72
2600	1.07	23.0	32.8	27.1	0.78
2700	1.47	22.6	31.9	26.3	0.89

# KU LNA BB 2227 A - Low Noise Broadband Preamplifier

## Outline Drawings

(Unit: mm)

