

KU LNA 1090-2 A TM - Low Noise Selective Preamplifier

Technical Specifications

Electrical Specifications				
Parameter	Min.	Typ.	Max.	Units
Frequency	1070		1110	MHz
Gain	30			dB
Gain Flatness		±1		dB
Noise Figure		0.5	0.6	dB
Input Return Loss (S11)		10		dB
Output Power at 1 dB Compression (P1dB)		18		dBm
Output Third Order Intercept (IP3)		28		dBm
DC Supply Voltage	8		15	V
Supply Current		130		mA

Mechanical Specifications	
Input Connector	N-female, 50 ohms
Output Connector	N-female, 50 ohms
Case	water resistant case incl. V2A mounting clamp
Dimensions (L x W x H)	109 x 85 x 60 mm
Weight	330 g

Applications:

Low Noise Amplifier for Avionics
 DS-B Automatic Dependent Surveillance
 Broadcast
 IFF

Fulfilled Standards:

EMC directive 2014/30/EU
 Low voltage directive 2014/35/EU
 RoHS directive 2011/65/EU

Maximum Ratings	
Parameter	Ratings
Operating Temperature	-40..65°C
DC Voltage	18 V
Input RF Power	0 dBm

Permanent damage may occur if any of these limits are exceeded.

Noise figure specified at 18°C, will increase with higher temperature.

[Link](#) to the product page online.

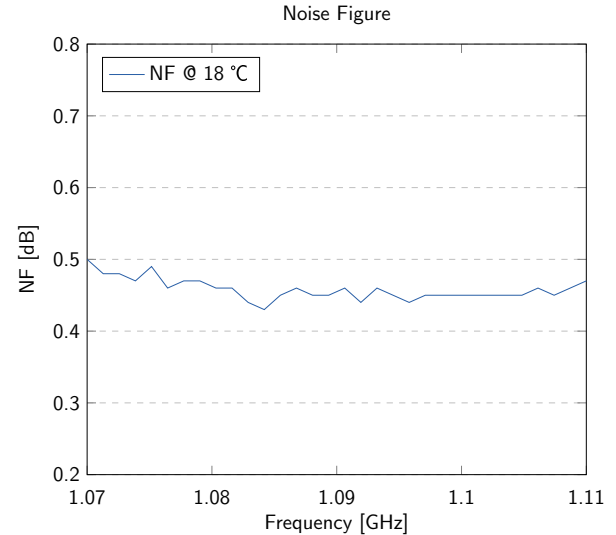
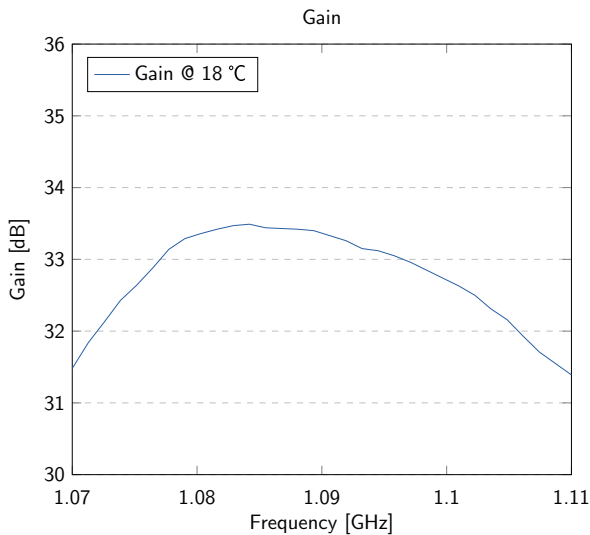


Features:

High IP3 for excellent large signal performance
 ESD protection at preamplifier input
 Built-in bias tee for remote power supply via coaxial cable
 Built-in band pass filter

Typical Performance Data and Curves

(DC Voltage = 12V, DC Current = 130mA)



Notice

Additional protection against moisture is essential in case of outdoor installation. Installation in a waterproof case is recommended.

Test Certificate

Sig.: _____

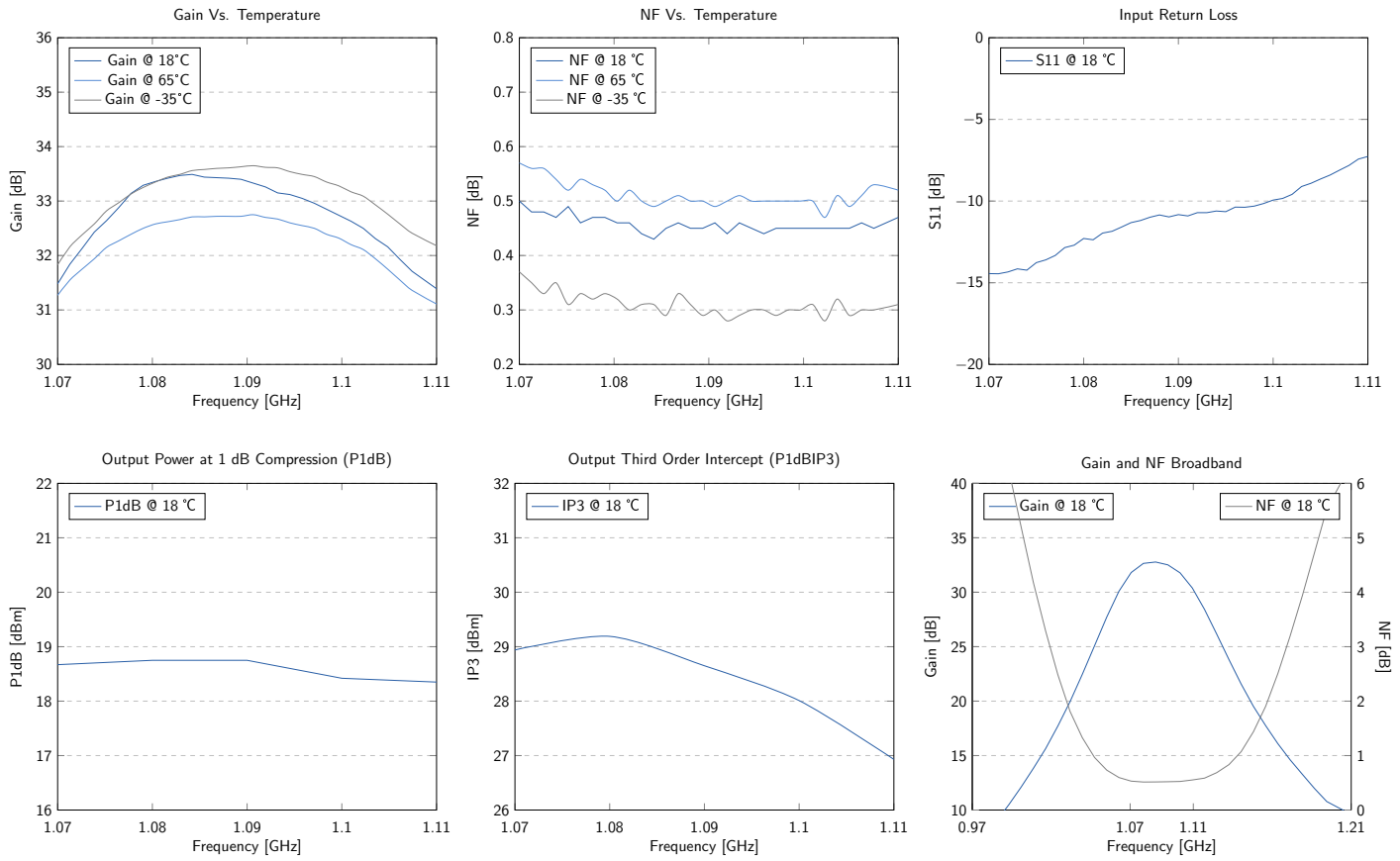
QS: _____

SN: _____

KU LNA 1090-2 A TM - Low Noise Selective Preamplifier

Typical Curves

(DC Voltage = 12V, DC Current = 130mA)



Typical Data

(DC Voltage = 12V, DC Current = 130mA)

Frequency (MHz)	VSWR	P1dB (dBm)	IP3 (dBm)	Gain (dB)	Noise Figure (dB)
1070	1.47	18.7	28.9	31.5	0.50
1080	1.64	18.8	29.2	33.4	0.46
1090	1.81	18.8	28.7	33.3	0.46
1100	1.93	18.4	28.0	32.7	0.45
1110	2.53	18.4	26.9	31.4	0.47

KU LNA 1090-2 A TM - Low Noise Selective Preamplifier

Outline Drawings

(Unit: mm)

